

# JUNIOR POST HIGH SCHOOL PLANNING

**Brookline High School**

# COLLEGE & CAREER CENTER: LENNY LIBENZON



College-related presentations, etc.  
Work with challenging situations. Please contact your counselor first.

[lenny\\_libenzon@psbma.org](mailto:lenny_libenzon@psbma.org)

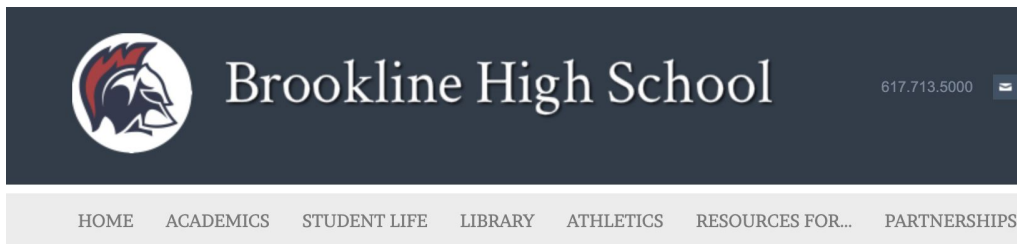
# COLLEGE & CAREER CENTER: KATE KENNEDY



Career exploration /  
career info/  
interviewing/ job  
shadows / supporting  
students with  
alternative post grad  
plans, such as trades

[kate\\_kennedy@psbma.org](mailto:kate_kennedy@psbma.org)

# HTTP://BHS.BROOKLINE.K12.MA.US/GUIDANCE



## Gap Year Fair

1/5/2021

Thinking about a Gap Year?

BHS Guidance Department and USA Gap Year Fairs are proud to announce the annual virtual BHS Gap Year Fair (Wednesday, January 13, starting at 6:30 pm). We will hold a Gap Year 101 webinar from 6:30 to 7:15, followed by the Gap Year Fair till 8:30 pm. You will be able to connect with Gap Year Experts, programs and alumni. Please register at <https://bit.ly/37jL83> (Links to an external site.)

See the attached Flyer for more information

Mr. L

BHS College Counselor

# JUNIOR SEMINARS

January and February during T block



# JUNIOR PARENT AND STUDENT NIGHT

1/21 6:30 PM

zoom meeting ID:

914 4049 7278

Passcode: 775945

BHS COLLEGE FAIR

MARCH 10

6:30 PM

# CLASS OF 2020 OUTCOMES

<u>Outcome</u>	<u>% of students</u>
2 Yr College	3.90%
4 Yr College	85.20%
Employed	2.30%
Military	1.10%
Non-U.S. College	3.40%
Other (Prep, etc)	1.40%
Year Off	2.30%

# CLASS OF 2020 MOST POPULAR COLLEGES

<u>College</u>	<u>Apply</u>	<u>Accept</u>	<u>Attend</u>
UMass Amherst	265	168	39
Northeastern	143	45	21
Boston University	122	56	18
UMass Boston	86	47	17
Tufts University	76	13	12
Brandeis University	55	22	10
MassBay	12	6	8
UConn	33	20	8
Mass College Pharm(MCPHS)	17	12	7

# COMMUNITY COLLEGE & MASS TRANSFER

<https://www.mass.edu/masstransfer/>

## Commonwealth Commitment to Students:

- ✓ **Freeze on all tuition & mandatory fees on program entry**  
Valid until student successfully completes or leaves  
Commonwealth Commitment program
- ✓ **A 10% rebate off tuition & mandatory fees**  
Payable at the end of every successfully completed semester
- ✓ **Additional MassTransfer Tuition Credit on bachelor's program entry**
- ✓ **Guaranteed admission**  
Space permitting in the major and college
- ✓ **Guaranteed transfer of credits**
- ✓ **No application fee or essay**  
MassTransfer Application required by deadline

COLLEGES WILL USE  
HOLISTIC &  
CONTEXTUAL REVIEW  
THIS YEAR

*ADMISSIONS ARE LIVING IT AS  
WELL. WE ARE IN IT TOGETHER.  
WE UNDERSTAND THAT MOST OF  
YOUR ACTIVITIES WERE  
SUSPENDED.*

# TEST-OPTIONAL

Many colleges are continuing to be test-optional for the next year and beyond.

1680+ colleges are now test-optional.

72% of 4-year colleges for current seniors, & this will likely continue

For the complete list, go to [fairtest.org](https://fairtest.org)

LIKE MANY INSTITUTIONS, TUFTS IS  
NEWLY SAT AND ACT TEST-OPTIONAL.

**57%** OF ED I APPLICANTS DID NOT  
SUBMIT STANDARDIZED TEST SCORES;

**56%** OF ADMITTED STUDENTS DID  
NOT SUBMIT SCORES

TEST DATES: COLLEGEBOARD.ORG & ACTSTUDENT.ORG

AP	SAT	ACT
	March	
		April
May	May	
	June	June
		July
	August	

# REGULAR DECISION

Apply by January 15

Decision by April 1

Choose by May 1st

Check the college website for specific deadlines!

# EARLY ACTION

Apply by November 15

Decision by mid-December

Choose by May 1st

You can apply to several schools Early Action. UMass Amherst deadline this year was Nov 05.

# EARLY DECISION

Apply by November 15

Decision by mid-December

Choose by YOU HAVE TO GO TO THIS SCHOOL

You can apply to only ONE (1) school Early Decision. Since you have to go if admitted, you might get less financial assistance.

# COLLEGES ARE LOOKING FOR (IN ORDER OF IMPORTANCE)

- 1) Grades
- 2) Grades
- 3) Grades
- 4) Scores, if available
- 5) Essays, Recommendations
- 6) Activities
- 7) Financial Resources
- 8) Everything Else

# IMPORTANT: BALANCED SENIOR YEAR

We send only your final grades for gr 9-11.

We send 1st and 2nd term grades to colleges

It is important to take a balanced load of classes



# FIT DIMENSIONS

- Size
- Location
- Academic Interests
- Culture
- Are classes taught by professors?
- Can we afford the college?

THE TOP-RATED GUIDE TO THE BEST COLLEGES  
OVER 1 MILLION FISKE BOOKS SOLD!

# FISKE GUIDE TO COLLEGES

INCLUDES  
THE 2021  
BEST BUY  
SCHOOLS

2021

"The best college guide you can buy."  
—USA Today

## THE #1 BESTSELLING COLLEGE GUIDE

- ✓ Most trusted by guidance counselors, students, and parents
- ✓ Stories that show you what makes each school unique, packed with tips from current students
- ✓ Fiske's exclusive academic, social, and quality-of-life ratings for each school

**EDWARD B. FISKE**

37TH EDITION

The  
Princeton  
Review

2021

# THE BEST 386 COLLEGES

IN-DEPTH PROFILES & RANKING LISTS TO  
HELP FIND THE RIGHT COLLEGE FOR YOU  
BASED ON FEEDBACK FROM 143,000 STUDENTS

FREE ACCESS  
TO PRACTICE  
SAT® & ACT®  
TESTS!

BY ROBERT FRANEX  
WITH DAVID SOTO, STEPHEN KOO, AND JASON BECK

# RESEARCHING COLLEGES REMOTELY

COVID-19 has caused campuses to cancel classes, tours and admitted students days. However, there are a lot of online resources available to learn as much as you can in the meantime.

## **What you can do now from home:**

- Sign up for college newsletters and updates
- Open every email from the colleges you are interested in and click on the links
- Reach out to your admissions officers to establish contact and get any questions you have answered
- Attend Upcoming Virtual College Admission Events including tours and information sessions – check college websites
- Attend NACAC Virtual College Fairs

# Colleges



Type a college name

## MORE COLLEGE SEARCH OPTIONS

### Find Your Fit



SuperMatch®

College Match

Scattergrams

Advanced College Search

College Lookup

Show less

We want your feedback! What do you think about the new SuperMatch?

## SuperMatch College Search

||| Choose Fit Criteria

Location

Academics

Admission

Diversity

Institution Characteristics

Cost

Student Life

Athletics

### Your Fit Criteria

0 selected criteria

Select Criteria To Start

To refine your results, use the arrows to move your criteria into the "Must Have" and "Nice to Have" boxes.

### Must Have

A *Must Have* is anything you absolutely need to be happy and successful.

No Results Yet

## College Match

Colleges Looking For Students Like You

Colleges Other Students Like

Colleges That Have Accepted Students Like You

The colleges in this list are interested in receiving applications from students similar to you. Please note this does not guarantee an application.

### Nichols College

📍 45 miles from your school

At Nichols College, you'll learn leadership and business know-how from our faculty of industry experts, all within a supportive community. It's an approach that works: we're ranked as a top business school for salary potential and best value.

👉 Not interested

### Miami University, Oxford

📍 735 miles from your school

Robert Frost once called Miami University "the most beautiful campus that ever there was." U.S. News & World Report ranks us among the best for our commitment to undergraduate teaching. Experience 200 years of inspiration at an original Public Ivy.

👉 Not interested

# BHS COLLEGE VISITS

9/ 21 - 11/ 9

4 pm - 8 pm

## BHS Calendars

bhs.brookline.k12.ma.us/  
calendars.html

College Visits	
SEPTEMBER Mon 21 04:00PM	University of Massachusetts-Lowell 📍 Virtual Visit (Link available at visit time)
SEPTEMBER Mon 21 04:40PM	University of Massachusetts-Amherst 📍 Virtual Visit (Link available at visit time)
SEPTEMBER Mon 21 05:20PM	University of Southern Maine 📍 Not Specified
SEPTEMBER Mon 21 06:00PM	University of Tampa 📍 Virtual Visit (Link available at visit time)
SEPTEMBER Mon 21 06:40PM	Embry-Riddle Aeronautical University-Daytona Beach 📍 Virtual Visit (Link available at visit time)
SEPTEMBER Mon 21 07:20PM	Bryn Mawr College 📍 Virtual Visit (Link available at visit time)

# APPLY TO

## SAFETY



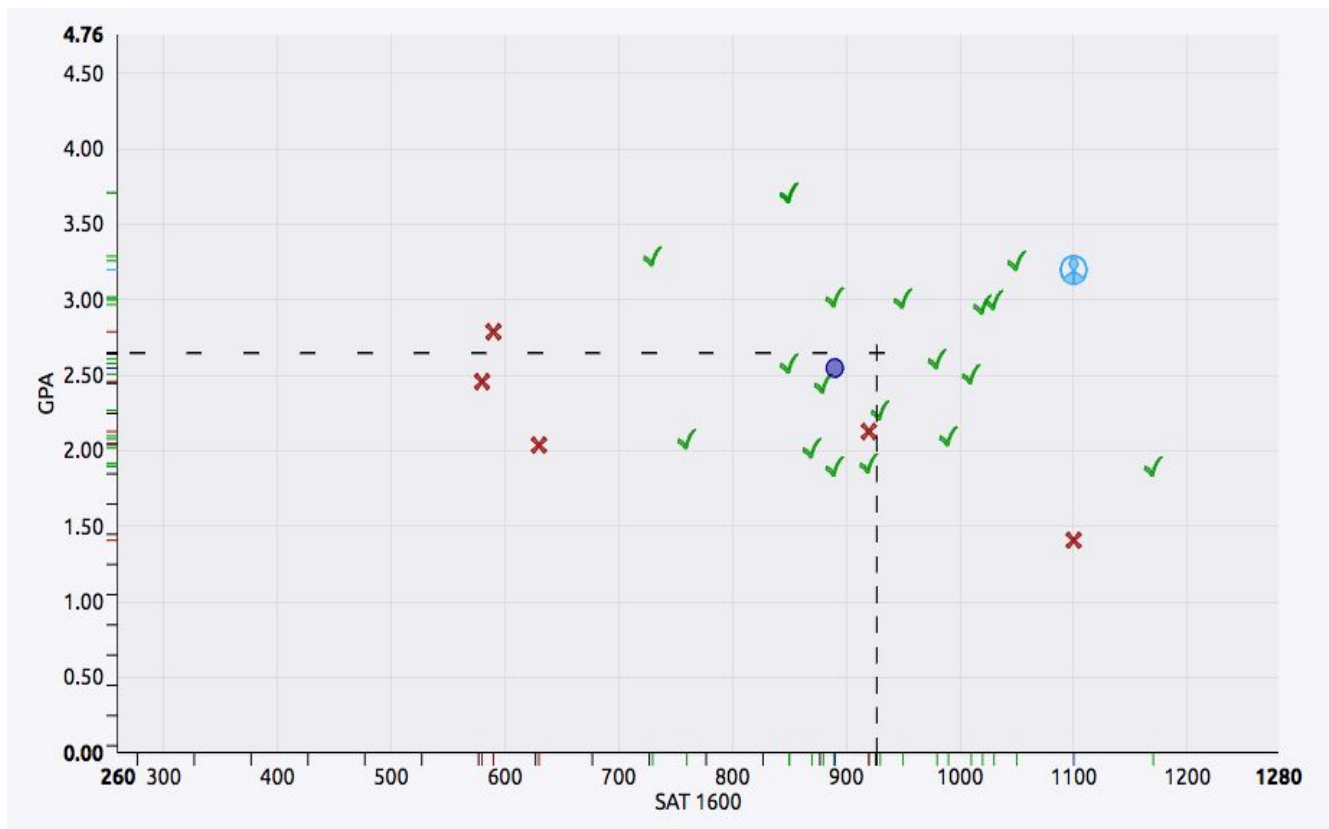
## MATCH



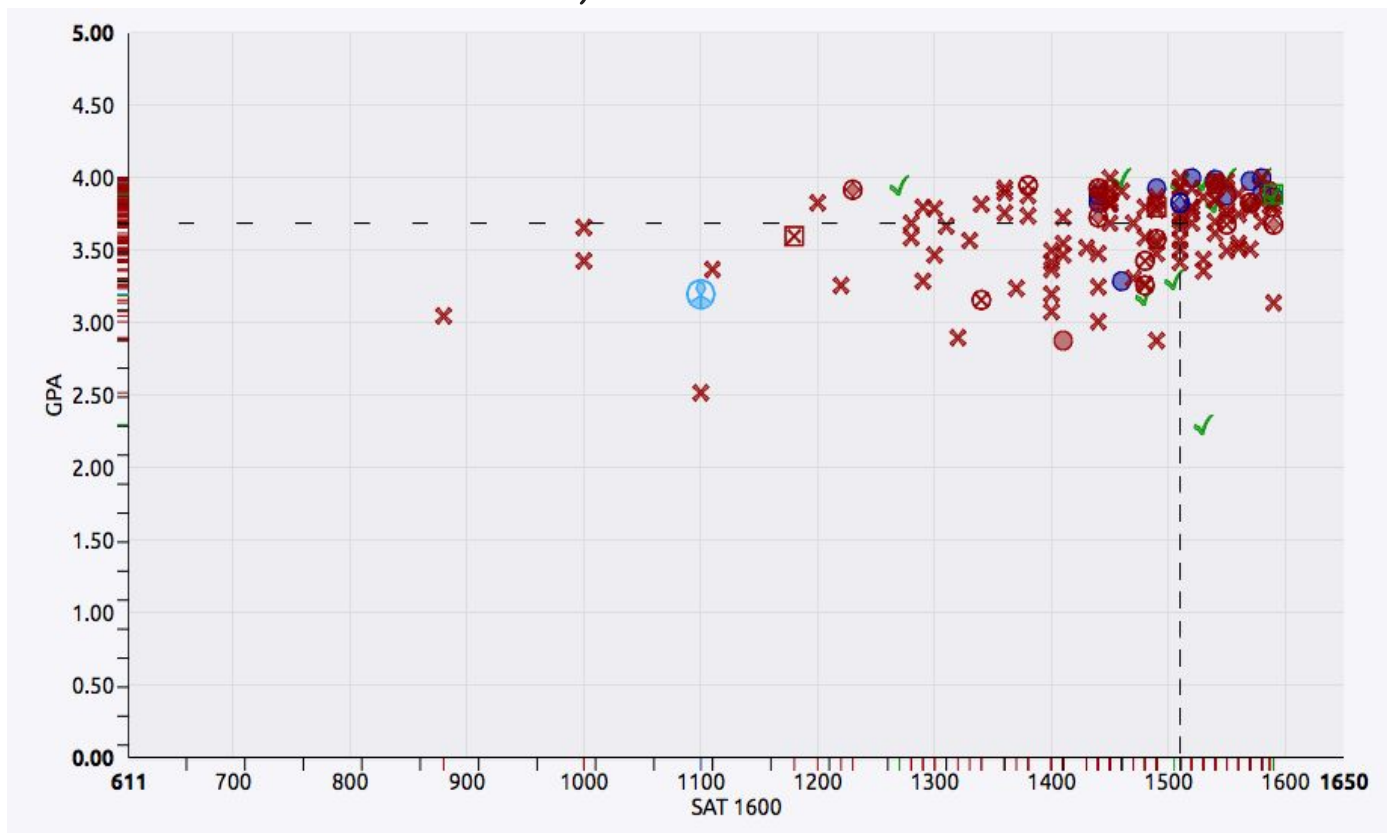
## REACH



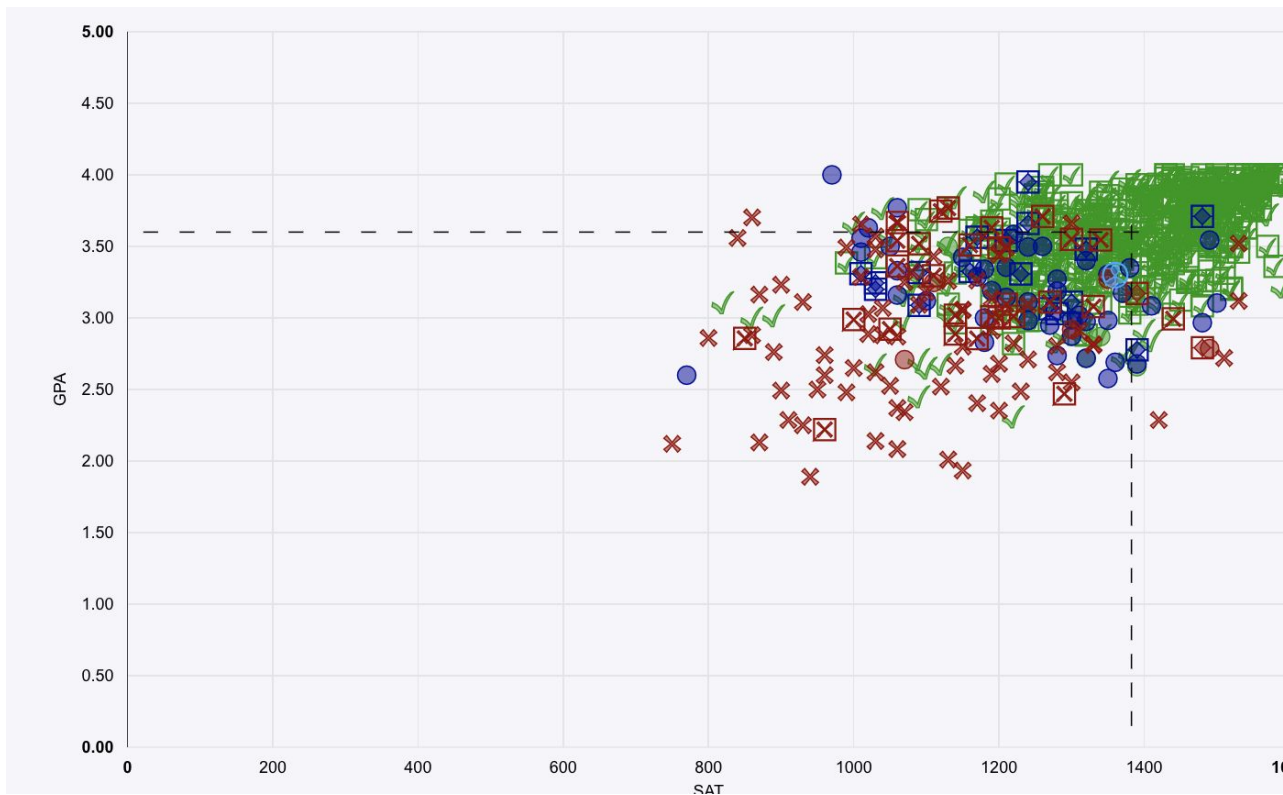
# NAVIANCE GRAPH: SAFETY, MATCH OR REACH?



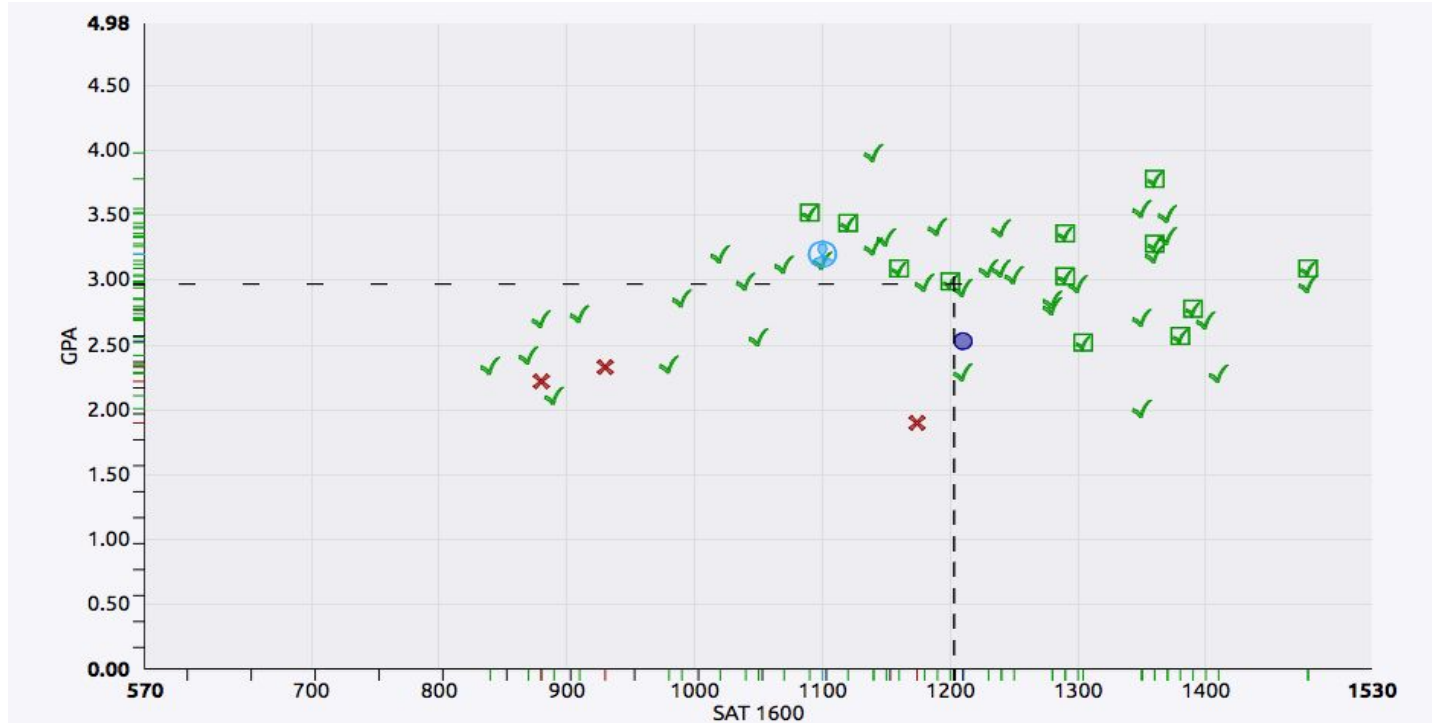
# NAVIANCE GRAPH: SAFETY, MATCH OR REACH?



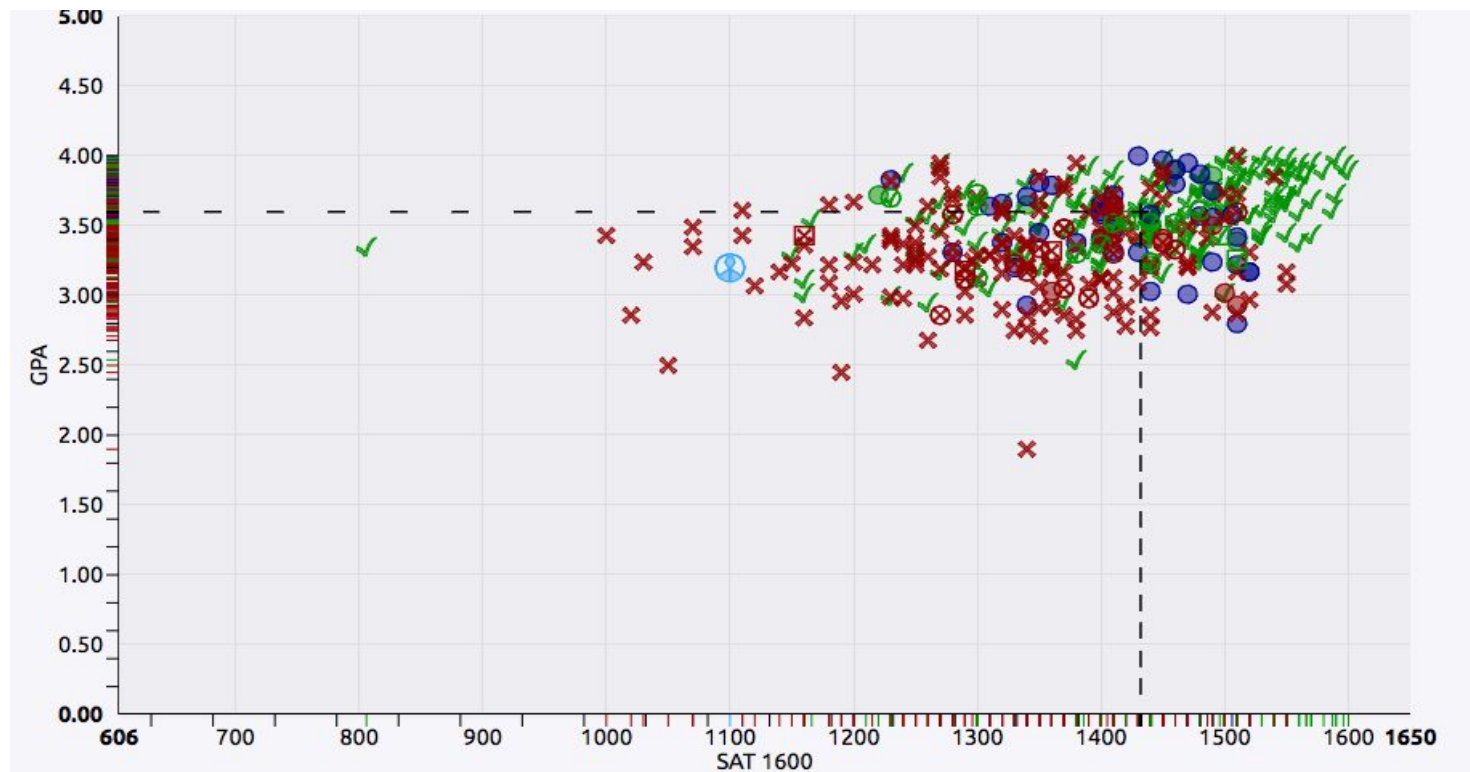
# NAVIANCE GRAPH: SAFETY, MATCH OR REACH?



# UNIVERSITY OF MAINE



# NEW YORK UNIVERSITY



# GPA

Unofficial BHS GPA has been updated on Naviance (grade 10 final grades. Go to About Me:: Profile

For class of 2021, we did not share GPA with colleges; most admission offices calculate their own GPA anyway.

No official decision on GPA for class of 2022 yet.

POST GRADUATION  
OPTIONS FOR STUDENTS  
WITH LD  
MARCH 31, 6:30 PM



*“Please be private about your scores, GPAs, and the colleges you are eligible for...College Process is an independent, personal journey and not a peer-judged contest!” (BHS Parent)*