

SELECT SOLUTIONS

Homework Title: Wicked Fun Practice Exercises Part 2

1b. $y = -\cos[4\pi(x - 10.25)] + 19$

2a. Starting at 1 sec and then every 6 seconds after that. So, 1 sec, 7 sec, 13 sec, etc.

2b. 60 ft.

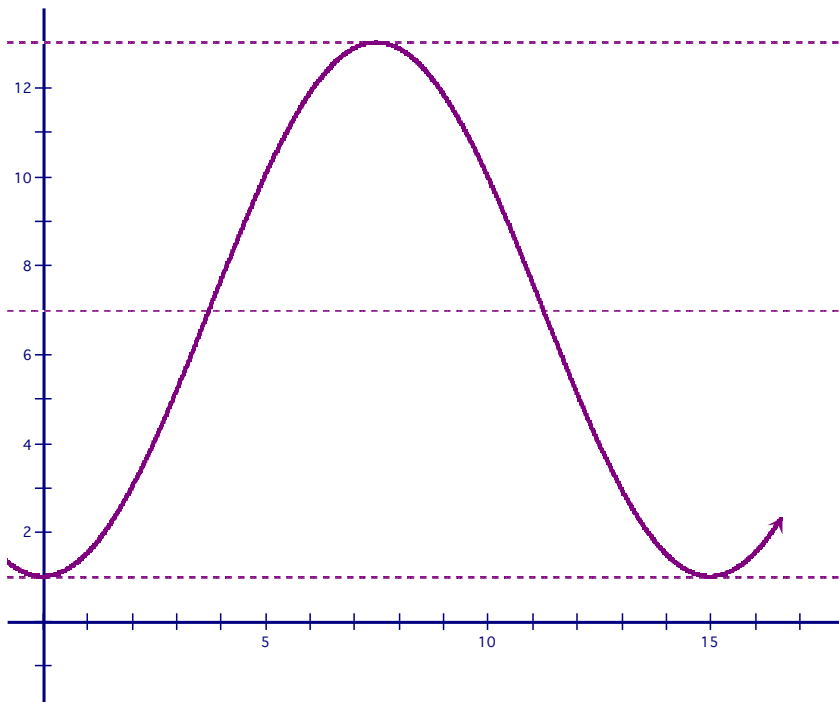
2c. Starting at 4 sec and then every 6 seconds after that. So, 4 sec, 10 sec, 16 sec, etc.

2d. 40 ft

2e. 10 rotations

2f. 10 ft.

3a.



3b. $h(t) = -6\cos\left[\frac{2\pi}{15}(t)\right] + 7$

3c. 10 ft.

3d. 2.5 sec, 12.5 sec, 17.5 sec, 27.5 sec