

BROOKLINE HIGH SCHOOL

115 GREENOUGH ST. BROOKLINE, MA 02445 617.713.5016 BHS.BROOKLINE.K12.MA.US
P R O F I L E

CEEB code

220445

bhs.brookline.k12.ma.us

Headmaster

Anthony Meyer

Counselors

Darby Neff-Verre

Guidance Coordinator

Lenny Libenzon

College Counselor

Sara Aggeler

Nicole Bent

Kate Cordner

Richard Gorman

Ellen Herz

Clifton Jones

Kara Lopez

Eric Schiff

Kathleen Whelan

Alexandra Young

Linda Wentzell

Registrar

Brenda Aguilar

Bethany Castellano

Guidance Secretaries

Stephanie Hunt

African-American Latino Scholars

Courtney Valentine

METCO

Amy Bayer

ACE

Daniel Bresman

SWS

Wendy Ryder

April Zyriek

Special Education

Owen Minott

Winthrop House

Superintendent

Andrew Bott

Accreditation: New England Association of Schools and Colleges (N.E.A.S.C.)

Brookline High School is a member of the National Assoc. for College Admission Counseling and complies with the NACAC Statement of Principles of Good Practice.

Brookline High School was founded in 1843. Today, BHS educates an extraordinarily diverse population of students representing 76 nations and most ethnic groups. 26% of BHS students speak a first language other than English, and 41 languages are spoken by our students.

Recognized as one of the finest schools in the nation by publications such as Boston Magazine, US News and World Report, and Newsweek, Brookline High School is known best for its extensive curriculum, outstanding faculty, and innovative programs and services, leading to students' academic success.

Brookline is a dynamic and progressive community of approximately 59,000 people, deeply committed to the success of its public schools. The school is 7.0% African American, 17.1% Asian, 11.6% Hispanic, 55.6% White, and 7.7% Multi-Ethnic. The median household income in the town is just above \$90,000. In contrast, 15.5% of the students qualify for free or reduced-price lunch. Eight elementary schools and one comprehensive high school educate approximately 7,200 students.

Marking System

The mission of Brookline High School is to develop capable, confident, life-long learners who contribute to their community, participate thoughtfully in democracy, and succeed in a diverse and evolving global society. In order to graduate from The High School, students must earn a total of 22 credits.

A=4.0; A-=3.7; B+=3.3;
B=3.0; B-=2.7; C+=2.3;
C=2.0; C-=1.7; D+=1.3;
D=1.0; D-=0.7; E=0;

Options: P = Pass; F = Fail;
W = Withdrew;
L = Late Entry -- too late for assessment in current marking period;
N= Failure due to attendance inadequate to meet the requirements of the course.

Grade Point Average is calculated at the end of the junior year and measures final grades from the 10th and 11th grades. All courses granting at least one-half credit per semester are included, except those taken on a pass fail basis and those earning a grade of "N". Advanced Placement and Honors courses are not weighted. Many Senior Year classes are unlevleved. Independent study is available to students on a contractual basis. Levels are clearly indicated on the student's transcript. Marks earned for grades 10 & 11 are averaged on a 4 point scale.

Information on attendance and discipline is not available to colleges per school policy.

We counsel students to answer honestly any questions regarding their disciplinary history on a college application.

School

Total enrollment	2107
Grades included	9, 10, 11, 12
Size of current senior class	499

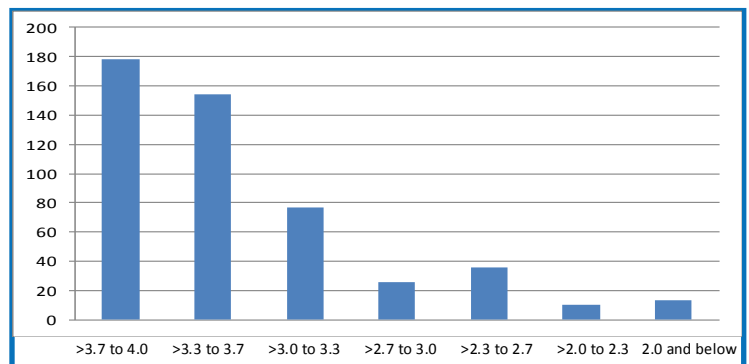
College Admissions Test Scores

SAT Scores, Class of 2018

	EBRW	Math	Total
BHS Mean	634	655	1290
MA Mean	562	563	1125
National Mean	536	531	1068

Class of 2019 Grade Distribution

(Note: We do not calculate rank in class.)



National Merit Scholars

Class of 2018 National Merit Scholar Semi-finalists	7
Class of 2018 National Merit Scholar Commendations	37
Class of 2018 National Hispanic Recognition	7
Class of 2018 National Merit Scholar Finalists	7

Advanced Placement at BHS

BHS offers 18 AP courses: American Government, Biology, Calculus AB, Calculus BC, Chemistry, Chinese, Environmental Science, French, Human Geography, Japanese, Latin, Music Theory, Physics 1&2, Physics C, Spanish, Statistics, Studio Art, and U.S. History.

In May 2017, 552 BHS students took 1,165 AP examinations, with 94.6% earning a score of 3 or higher, and 78.4% earning 4 or higher. The accompanying chart shows the distribution of scores on AP exams.

School Totals	5	4	3	2	1
Total Exams	523	351	213	69	9
% of Total	45%	30%	18%	6%	1%

Subject Totals	5	4	3	2	1	#
Biology	34	26	5	1		66
Calculus AB	64	42	33	9	1	149
Calculus BC	62	6	2			70
Chemistry	46	21	14	1		82
Chinese	19	5	7			31
Comp. Sci.	7	9	4	2		22
English Lang.	25	27	17	5		74
English Lit.	1	2	6	1		10
Environmental Sci.	13	18	2	2	1	36
French	15	9	9			33
Human Geography	30	28	10	6		74
Japanese	4		7			11
Latin	2	1	6	1		10
Music Theory	10	7		3		20
Physics 1	8	14	8	6		36
Physics 2	3	4	14	9		30
Physics C: Elec/ Mag	27	13	13	6	2	61
Physics C: Mechanics	28	23	9	3	1	64
Spanish	40	22	4			66
Statistics	17	11	3	2		33
Studio Art	8	1				9
US Gov and Politics	10	10	12	4		36
US History	40	47	22	8	2	119

AP Scholars Total Scholars: 233; Average Score: 4.27

	AP Scholar	AP Scholar with Honor	AP Scholar with Distinction	National AP Scholar
Number	86	57	90	3
Average Score	3.96	4.17	4.44	4.73



Class of 2018 - 457 graduates

Attending 4-Year Colleges	82%
Attending 2-Year Colleges:	3.5%
Attending non-U.S. Colleges:	5.5%
Total Continuing Education	91%
Employment	3.3%
Other, Including Military	2%
Gap Year	3.7%

Colleges Attending (Class of 2018)

Allegheny, American*, Amherst*, Assumption, Austin, Babson, Bard, Barnard*, Bates, Bentley, Berklee of Music, Binghamton, Boston C., Boston U.*, Boston*, Brandeis*, Bridgewater State, Bridgton Academy, Brown, Bryn Mawr, Bucknell, Buena Vista, Bunker Hill CC*, C of Charleston, Carleton, Carnegie Mellon, Central Texas, Champlain, Chapman, Charite - UBerlin, Claremont McKenna, Clark*, Colby, Connecticut C.*, Cornell*, Cornish C of the Arts, Curry, Dartmouth, Davidson, Davis, Denison, DePaul, Drexel*, Eastern Nazarene, Eastman School of Music, Eckerd, Elon, Embry-Riddle Aeronautical, Emerson, Emmanuel, Emory*, Florida IT, Fordham, Framingham State, George Washington, Georgia State, Georgia Tech., Hampshire, Harvard*, Haverford, Holy Cross, International Christian, Ithaca, Jefferson / Philadelphia, Johns Hopkins, Kenyon, La Salle, Lehigh, Lesley, Lewis & Clark, Lowell*, Macalester, Marymount Manhattan, Mass. Bay Community*, Mass. of Art and Design, McGill*, MCPHS - Mass of Pharmacy, Miami U, Michigan State, Middle Tennessee State, Middlebury, New York U*, Newbury, Northeastern*, Northwestern*, NYU Shanghai, Oberlin, Occidental, Olin, Oxford, Pace, Penn State, Pine Manor, Pitzer, Pomona, Purdue, Queen's, Quinnipiac, R.I.T., R.P.I., Reed, Regis, Roger Williams, Roosevelt, Rutgers, Salem State, Santa Barbara, Sarah Lawrence, Savannah C.A.D., Scripps, Seattle, Sewanee: U South, Simmons*, Skidmore*, Smith, Southern New Hampshire, Springfield, Stonehill, Suffolk*, Swarthmore, Syracuse, Temple, Trinity, Trinity C Dublin, Tufts, Tulane, UBritish Columbia, UC, UC, UChicago, UCLA*, UColorado, UConnecticut, UCSD, UEdinburgh, UExeter, UFlorida, UIllinois, UIndiana, UMaine, UManchester, UMaryland, UMass., UMass., UMass., UMass. Dartmouth*, UMiami, UMichigan, UNew Hampshire, Union (New York), United Arab Emirates, UPittsburgh, URhode Island, URochester, US Coast Guard Academy, US Naval Academy, USouth Alabama, USt Andrews, UTexas, UToronto*, UVermont, UVirginia, UWashington, UWisconsin, Vanderbilt, Vassar*, Villanova, W.P.I., Washington U. in St. Louis, Wells, Wentworth I.T.*, Wesleyan*, Wheaton, William and Mary, Worcester State, Yale*

*INDICATES TOP 30 SCHOOLS ATTENDING