

# BROOKLINE HIGH SCHOOL

115 GREENOUGH ST. BROOKLINE, MA 02445 617.713.5016 BHS.BROOKLINE.K12.MA.US  
**P R O F I L E**

## CEEB code

220445

bhs.brookline.k12.ma.us

**Headmaster**  
Deborah Holman

## Counselors

**Lenny Libenzon**  
Guidance Coordinator

**Nicole Bent**  
**Richard Gorman**  
**Ellen Herz**  
**Clifton Jones**  
**Kara Lopez**  
**Eric Schiff**

**Jeanette Sergeant**  
**Kathleen Whelan**  
**Alexandra Young**

**Linda Wentzell**  
Registrar

**Brenda Aguilar**  
**Diane Kimball**  
Guidance Secretary

**Chris Vick**  
African-American Scholars

**Keith Lezama**  
METCO

**Bartlett Walker**  
OFC

**Daniel Bresman**  
SWS

**Sarah Orlov**  
**Jim Henry**  
Special Education

**Owen Minott**  
Winthrop House

**Superintendent**  
William H. Lupini

Accreditation: New England Association of Schools and Colleges (N.E.A.S.C.)

Brookline High School is a member of the National Association for College Admission Counseling and complies with the NACAC Statement of Principles of Good Practice.

Brookline High School was founded in 1843. Today, BHS educates an extraordinarily diverse population of students representing 76 nations and most ethnic groups. 26% of BHS students speak a first language other than English, and 31 languages are spoken by our students.

Recognized as one of the finest schools in the nation by publications such as Boston Magazine, US News and World Report, and Newsweek, Brookline High School is known best for its extensive curriculum, outstanding faculty, and innovative programs and services, leading to students' academic success.

Brookline is a dynamic and progressive community of approximately 59,000 people, deeply committed to the success of its public schools. The school is 8% African American, 15% Asian, 10% Hispanic, 60% White, and 6% Multi-Ethnic. The median household income in the town is just above \$90,000. In contrast, 15.5% of the students qualify for free or reduced-price lunch. Eight elementary schools and one comprehensive high school educate approximately 7,100 students.

## Marking System

The mission of Brookline High School is to develop capable, confident, life-long learners who contribute to their community, participate thoughtfully in democracy, and succeed in a diverse and evolving global society. In order to graduate from The High School, students must earn a total of 22 credits.

A=4.0; A-=3.7; B+=3.3;  
 B=3.0; B-=2.7; C+=2.3;  
 C=2.0; C-=1.7; D+=1.3;  
 D=1.0; D-=0.7; E=0;

\*N= Failure due to attendance inadequate to meet the requirements of the course.

Options: P= Pass; F = Fail;  
 W = Withdrew

Grade Point Average is calculated at the end of the junior year and measures final grades from the 10th and 11th grades.

All courses granting at least one-half credit per semester are included, except those taken on a pass fail basis and those earning a grade of "N". Advanced Placement and Honors courses are not weighted. Many Senior Year classes are unlevleled. Independent study is available to students on a contractual basis. Levels are clearly indicated on the student's transcript. Marks earned for grades 10 & 11 are averaged on a 4 point scale.

Information on attendance and discipline is not available to colleges per school policy.

We counsel students to answer honestly any questions regarding their disciplinary history on a college application.

## School

Total enrollment	1797
Grades included	9, 10, 11, 12
Size of senior class	404

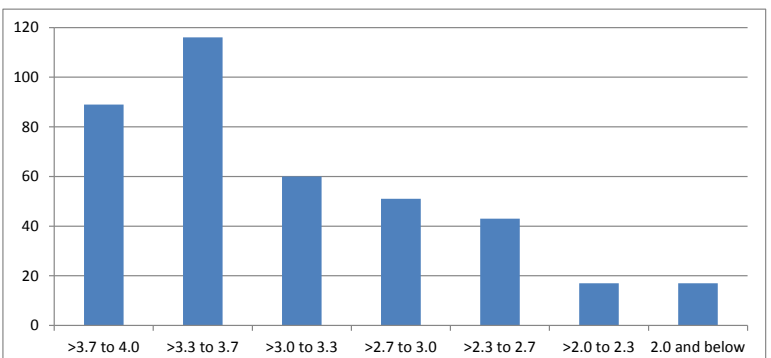
## College Admissions Test Scores

SAT I Scores, Class of 2013

	Critical Reading	Math	Writing
75 <sup>th</sup> Percentile	680	690	690
50 <sup>th</sup> Percentile	600	630	600
BHS Mean	591	608	589
MA Mean	515	529	509
National Mean	496	514	488

## Class of 2014 Grade Distribution

(Note: We do not calculate rank in class.)



## National Merit Scholars

Class of 2014 National Merit Scholar Semi-finalists	14
Class of 2014 National Merit Scholar Commendations	41
Class of 2014 National Achievement Scholars	2
Class of 2014 National Hispanic Scholars	2

## Advanced Placement at BHS

BHS offers 18 AP courses, including American Government, Biology, Calculus AB, Calculus BC, Chemistry, Chinese, Environmental Science, European History, French, Japanese, Latin, Music Theory, Physics B, Physics C, Spanish, Statistics, Studio Art, and U.S. History.

In May 2013, 397 BHS students took 849 AP examinations, with 94% earning a score of 3 or higher, and 87% earning 4 or higher. The accompanying chart shows the distribution of scores on AP exams.

School Totals	5	4	3	2	1
Total Exams	387	261	152	39	9
Percentage of Total	45.6%	30.8%	17.9%	4.6%	1.1%

Subject Totals	5	4	3	2	1
Biology	24	26	9		
Calculus AB	32	28	25	6	1
Calculus BC	50	5			
Chemistry	34	18	7	2	
Chinese Lang. & Culture	2	5	5		
English Language & Comp.	23	16	11	5	
English Literature & Comp.	14	17	13	4	
Environmental Science	27	17	2	2	
European History	8	6	4		
French Lang. & Culture	12	8	8		
Japanese Lang. & Culture	4		2	1	1
Latin	2		8	1	1
Music Theory	9	5	1	2	
Physics B	8	3	8	1	
Physics C: Elec. & Mag.	12	13	6	5	3
Physics C: Mechanics	17	13	7	3	
Psychology	4	2	2	1	1
Spanish Lang.	30	16	3		
Statistics	7	8	6		
Studio Art	2	2	4	1	
U.S. Gov't & Politics	20	11	9	1	1
United States History	45	41	12	4	1

**AP Scholars** Total Scholars: 169; Average Score: 4.40

	AP Scholar	AP Scholar with Honor	AP Scholar with Distinction	National AP Scholar
Number of Scholars	62	42	65	12
Average Score	3.99	4.26	4.55	4.81



## Class of 2013 - 415 graduates

Attending 4-Year Colleges	86.8%
Attending 2-Year Colleges:	5.8%
Total Continuing Education	95.1%
Employment	.7%
Other, Including Military	2.1%
Gap Year	2.1%

## Colleges Attending (Class of 2013)

American U., Amherst C., Arizona State U., Babson C., Bard C., Barry U., Bates C., Beloit C., Bennington C., Bentley U., Berklee C. of Music, Boston C., Boston Conservatory, Boston U., Bowdoin C., Brandeis U., Bridgewater State U., Brown U., Bunker Hill C. C., Carleton C., Carnegie Mellon U., Case Western Reserve U., Catholic U., Champlain C., Clark U., Colby C., Colby-Sawyer C., Colorado C., Colorado State U., Columbia C., Concordia U., Connecticut C., Cornell U., Curry C., Dartmouth C., Earlham C., Eckerd C., Emmanuel C., Endicott C., Eugene Lang C., Fairfield U., Fisher C., Fitchburg State U., Florida International U., Fordham U., Framingham State U., George Washington U., Gettysburg C., Guilford C., Hamilton C., Hampshire C., Hartwick C., Harvard U., Ithaca C., Johns Hopkins U., Johnson & Wales U., Juniata C., Lewis & Clark C., Long Island U., Marlboro C., Massachusetts Bay C. C., Massachusetts C. of Art and Design, Massachusetts C. of Pharmacy, MIT, Mass Maritime Academy, McGill U., Montana State U., Montserrat C. of Art, Mount Ida C., New England Conservatory of Music, NYU, Newbury C., North Shore C.C., Northeastern U., Oberlin C., Old Dominion U., Parsons, Penn State U., Pitzer C., Plymouth State U., Pratt Institute, Princeton U., Providence C., Purdue U., Quinnipiac U., Reed C., Regis C., RPI, Rhode Island C., RISD, Roanoke C., RIT, Rollins C., Roxbury C. C., Rutgers, Salem State U., Santa Clara U., Santa Monica C., Sarah Lawrence C., School of the MFA, Siena C., Simmons C., Skidmore C., Spelman C., St. John's C., St. Mary's C., Stanford U., Stetson U., Suffolk U., Syracuse U., Temple U., Culinary Institute, Trinity C., Tufts U., Tulane U., Union C., U. of Arizona, UCLA, UC Santa Barbara, U. of Colorado, UConn, U. of Delaware, U. of Hartford, U. of King's C., U. of Maine, U. of Maryland, UMass, Amherst, UMass, Boston, UMass, Dartmouth, UMass, Lowell, U. of Miami, U. of Michigan, U. of New Hampshire, U. of North Carolina, U. of Pennsylvania, U. of Pittsburgh, U. of Puget Sound, U. of Rhode Island, U. of Rochester, U. of Southern California, U. of Texas, U. of Vermont, U. of Wisconsin, Vassar C., Wake Forest U., Washington U. in St. Louis, Wellesley