

COLLEGE ADMISSIONS TESTING

A Roadmap for the SAT
and ACT

Brookline High School



SUMMIT
EDUCATIONAL
GROUP

Focusing on the Individual Student

ADMISSION FACTORS – HOLISTIC REVIEW

Academic

- Grades
- Strength of the curriculum
- Standardized testing scores (SAT, ACT, AP)

Non-academic

- Application essays
- Counselor recommendations
- Teacher recommendations
- Extracurricular activities
- Work experience

TEST OPTIONAL SCHOOLS

- Almost all colleges and universities have continued their test optional policies
- Some exceptions: MIT, Georgetown, University of FL, University of GA, military academies
- Encourage students to see the tests as a chance to show-off and have an everything to win, nothing to lose mindset

CAVEATS FOR TEST OPTIONAL

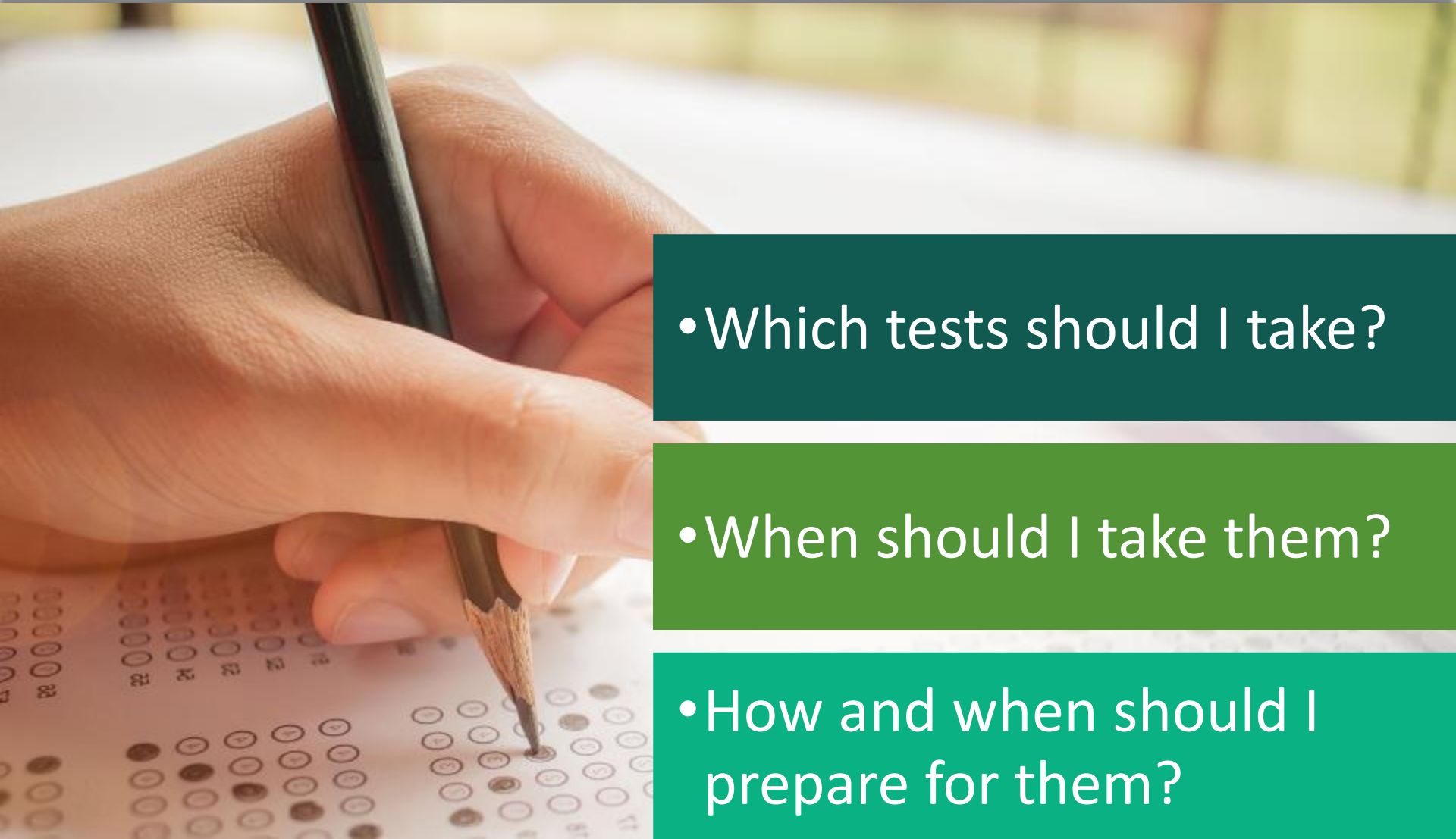
- Applying to the more selective colleges
- Recruited Athletes
- Consideration for Merit Scholarship Awards

STRATEGIC SUBMISSION OF TEST SCORES

Strategic Submission now much more common.

- Pre-pandemic only about 4% of students were classified as strategic submitters
- For the 2020 admissions cycle, 24% of students chose to submit to some schools and not others

CREATE A TESTING PLAN



- Which tests should I take?

- When should I take them?

- How and when should I prepare for them?

The New Digital Adaptive SAT

- College Board announced transition to an online adaptive SAT test January 25, 2022
- dPSAT in Fall 2023
- dSAT in Spring 2024 for domestic students
- Effective Spring 2023 for International students

PSAT IS PRACTICE FOR THE SAT

SAT (200–800)

PSAT 10, PSAT/NMSQT (160–760)

PSAT 8/9 (120–720)



PSAT scores show what you would have scored on the SAT on that same day.

SAT STRUCTURE – CURRENT VS. DIGITAL

CURRENT SAT (3 hours) CLASS OF 2024

200 - 800

Reading
(65 min)

Writing &
Language
(35 min)

200 - 800

Math
(No Calc)
(25 min)

Math
(Calc)
(55 min)

DIGITAL SAT (2 hours, 14 minutes) CLASS OF 2025

200 - 800

Reading &
Writing
(32 min)

Reading &
Writing
(32 min)

200 - 800

Math
(Calc)
(35 min)

Math
(Calc)
(35 min)

DIGITAL ADAPTIVE SAT -- THE CLASS OF 2025

WHAT'S CHANGING:



The test will be taken on a personal or school-issued laptop or tablet



The length of the test will drop from three hours to two



Students will gain faster access to scores



Calculators will be digitally accessible and may be used in all math sections



The test will be adaptive



The test will be more secure

DIGITAL ADAPTIVE SAT -- MARCH 2024

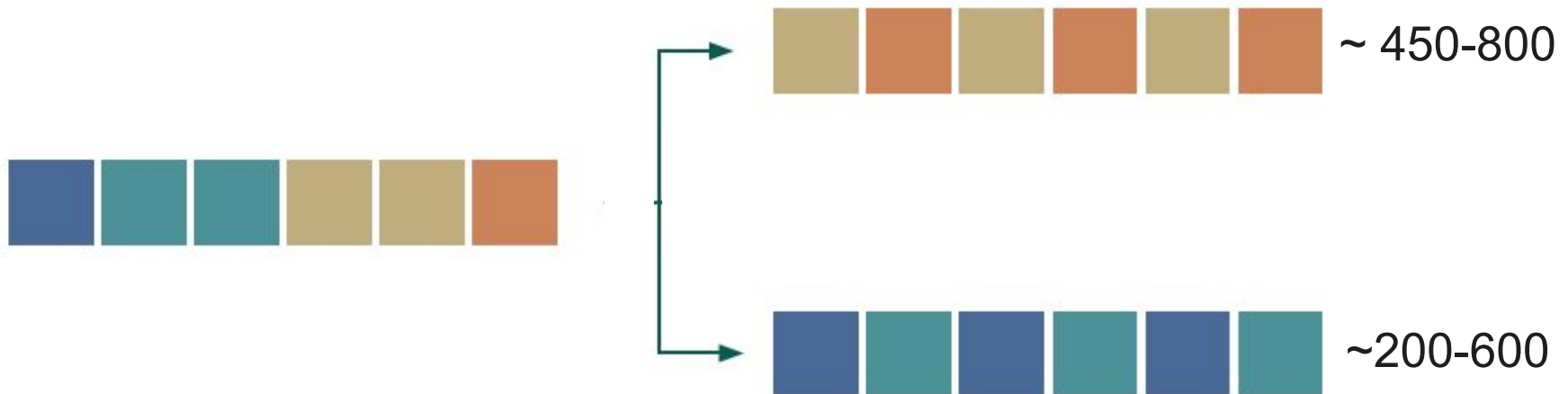
	Current SAT	New SAT
Test Length	3 hours	2 hours, 14 minutes
Scoring	400-1600 total score Scores available in 2-4 weeks	400-1600 total score Scores available in several days
Reading & Writing	100 minutes total (65-minute Reading section and 35-minute Writing & Language section) 96 questions and 9 long passages (about 10k words total) 1 minute per question	64 minutes total (32 minutes per section, Reading & Writing combined) 54 questions with 1 short passage each (about 5k words total) 1.2 minutes per question
Math	80 minutes total (25-minute no-calculator section and 55-minute calculator section) 58 questions 1.4 minutes per question Calculator not allowed in one section	70 minutes total (35 minutes per section) 44 questions 1.6 minutes per question Calculator allowed throughout the test and graphing calculator (Desmos) provided
Experimental/ Unscored Questions	Additional test section with unscored questions (randomly given at end of the exam) (20 minutes)	Each module contains 2 unscored questions (students will not know which questions are experimental) (8 questions total)

DIGITAL ADAPTIVE SAT – THE CLASS OF 2025

CURRENT SAT STRUCTURE – STATIC



NEW SAT STRUCTURE – ADAPTIVE



CURRENT SAT – WRITING & LANGUAGE

Some recipes don't fare well in the twenty-first century (one club member called her 1800s gingerbread a "molasses-laden brick"), while others had worked just fine.

9

9. A. NO CHANGE
B. work
C. worked
D. could have worked

DIGITAL SAT – READING & WRITING

Rabinal Achí is a precolonial Maya dance drama performed annually in Rabinal, a town in the Guatemalan highlands. Based on events that occurred when Rabinal was a city-state ruled by a king, _____ had once been an ally of the king but was later captured while leading an invading force against him.

Which choice completes the text so that it conforms to the conventions of Standard English?

- A) *Rabinal Achí* tells the story of K'iche' Achí, a military leader who
- B) K'iche' Achí, the military leader in the story of *Rabinal Achí*,
- C) there was a military leader, K'iche' Achí, who in *Rabinal Achí*
- D) the military leader whose story is told in *Rabinal Achí*, K'iche' Achí,

CURRENT SAT – READING

Passage 1

Mr. Lincoln likens that bond of the Federal Constitution, joining Free and Slave States together, to a house divided against itself, and says that it is

Line contrary to the law of God, and cannot stand.

5 When did he learn, and by what authority does he proclaim, that this Government is contrary to the law of God and cannot stand? It has stood thus divided into Free and Slave States from its organization up to this day. During that period we have increased from

10 four millions to thirty millions of people; we have extended our territory from the Mississippi to the Pacific Ocean; we have acquired the Floridas and Texas, and other territory sufficient to double our geographical extent; we have increased in population,

15 in wealth, and in power beyond any example on earth; we have risen from a weak and feeble power to become the terror and admiration of the civilized world; and all this has been done under a Constitution which Mr. Lincoln, in substance, says is

20 in violation of the law of God; and under a Union divided into Free and Slave States, which Mr. Lincoln thinks, because of such division, cannot stand. Surely, Mr. Lincoln is a wiser man than those who framed the Government. . . .

Current SAT

What can reasonably be **inferred** about the author's point of view from passage one?

Which choice provides the best evidence for the answer to the previous question?

DIGITAL SAT – READING

To dye wool, Navajo (Diné) weaver Lillie Taylor uses plants and vegetables from Arizona, where she lives. For example, she achieved the deep reds and browns featured in her 2003 rug *In the Path of the Four Seasons* by using Arizona dock roots, drying and grinding them before mixing the powder with water to create a dye bath. To intensify the appearance of certain colors, Taylor also sometimes mixes in clay obtained from nearby soil.

Which choice best states the main idea of the text?

- A) Reds and browns are not commonly featured in most of Taylor's rugs.
- B) *In the Path of the Four Seasons* is widely acclaimed for its many colors and innovative weaving techniques.
- C) Taylor draws on local resources in the approach she uses to dye wool.
- D) Taylor finds it difficult to locate Arizona dock root in the desert.

DIGITAL AND CURRENT SAT MATH

The graph of the linear function f has intercepts at $(a, 0)$ and $(0, b)$ in the xy -plane. If $a + b = 0$ and $a \neq b$, which of the following is true about the slope of the graph of f ?

- A) It is positive.
- B) It is negative.
- C) It equals zero.
- D) It is undefined.

Look and Feel of the New Test

Section 1, Module 1: Reading and Writing 28:20 100%

Directions ▾ Hide Annotate More

The mimosa tree evolved in South America. **mimosa trees in North America** *Bruchidius terrenus* were introduced to North America, far from any *B. terrenus*. But evolutionary links between predators and their prey can persist across centuries and continents. Around 2001, *B. terrenus* was introduced in southeastern North America near where botanist Shu-Mei Chang and colleagues had been monitoring mimosa trees. Within a year, 93 percent of the trees had been attacked by the beetles.

4 Mark for Review

Which choice best describes the function of the third sentence in the overall structure of the text?

(A) It states the hypothesis that Chang and colleagues had set out to investigate using mimosa trees and *B. terrenus*.

(B) It presents a generalization that is exemplified by the discussion of the mimosa trees and *B. terrenus*.

(C) It offers an alternative explanation for the findings of Chang and colleagues.

View/Edit: "to North America, far from any *B. terrenus* ." CLOSE X

Highlight Color: Underline style: U

mimosa trees in North America

Save Delete

<https://bluebook.app.collegeboard.org/>

Look and Feel of the New Test

The screenshot displays the Bluebook app interface. At the top, it shows "Section 2, Module 1: Math" and a timer at "31:56". There are navigation options for "Directions", "Hide", "Calculator", "Reference", and "More". The main content area shows a math problem: "equivalent to $x^2 + 3x - 40$?" with five multiple-choice options: "10)", "8)", "5)", "+4)", and "-4)". A calculator overlay is open, showing a graph of the parabola $y = x^2 + 3x - 40$ with x-intercepts at -10 and 8. The calculator keypad includes standard arithmetic operators, a scientific keypad, and a numeric keypad. At the bottom of the app, there are "Save" and "Delete" buttons.

<https://bluebook.app.collegeboard.org/>

ACT STRUCTURE

← ACT (3 hours 35 minutes) →

1 - 36

1 - 36

1 - 36

1 - 36

optional

English
(45 min)

Math
(60 min)

Reading
(35 min)

Science
(35 min)

Writing
(40 min)

ACT ENGLISH

In 2009, Libbrecht and Arnold's experiments revealed that triangular snowflakes begin with the same process of chemical bonding and forms⁸ a hexagonal shape. The triangular shape is an illusion resulting from one significant addition to the process⁹ dust.

8. F. NO CHANGE
G. were they to form
H. if they formed
J. form
9. A. NO CHANGE
B. process is
C. process:
D. process;

ACT READING

NATURAL SCIENCE: This passage is adapted from the article “The Jaws That Jump” by Adam Summers (©2006 by Natural History Magazine, Inc.).

Recently I was reminded of just how powerful ants can be when inflicting damage on intruders. A team of biomechanists has studied the incredibly speedy bite of a group of Central and South American ants. The team
5 clocked the bite as the fastest on the planet—and discovered that it also gives the ants the unique ability to jump with their jaws, adding to an impressive array of already known defenses.

Trap-jaw ants nest in leaf litter, rather than underground or in mounds. There they often feed on well-
10 armored and elusive prey, including other species of ants. As they stalk their dinner, the trap-jaws hold their mandibles wide apart, often cocked open at 180 degrees or more by a latch mechanism. When minute trigger
15 hairs on the inner edge of the mandible come in contact with something, the jaws snap shut at speeds now known to reach 145 miles per hour. No passerby could outrace that. The astoundingly high speed gives the jaws, despite their light weight, enough force to crack
20 open the armor of most prey and get at the tasty meat inside.

The key to the jaws’ speed (and their even more amazing acceleration) is that the release comes from stored energy produced by the strong but slow muscles
25 of the jaw. Think how an archer slowly draws an arrow in a bowstring against the flex of a bow: nearly all the energy from the archer’s muscles pours into the flexing of the bow. When released, the energy stored in the bow wings the arrow toward its target much faster than the
30 archer could by throwing the arrow like a javelin. The biomechanics of energy storage is the domain of Sheila

The passage points to which of the following as a characteristic of trap-jaw ants’ mandibles that prevents the ants from harming themselves with their powerful bite?

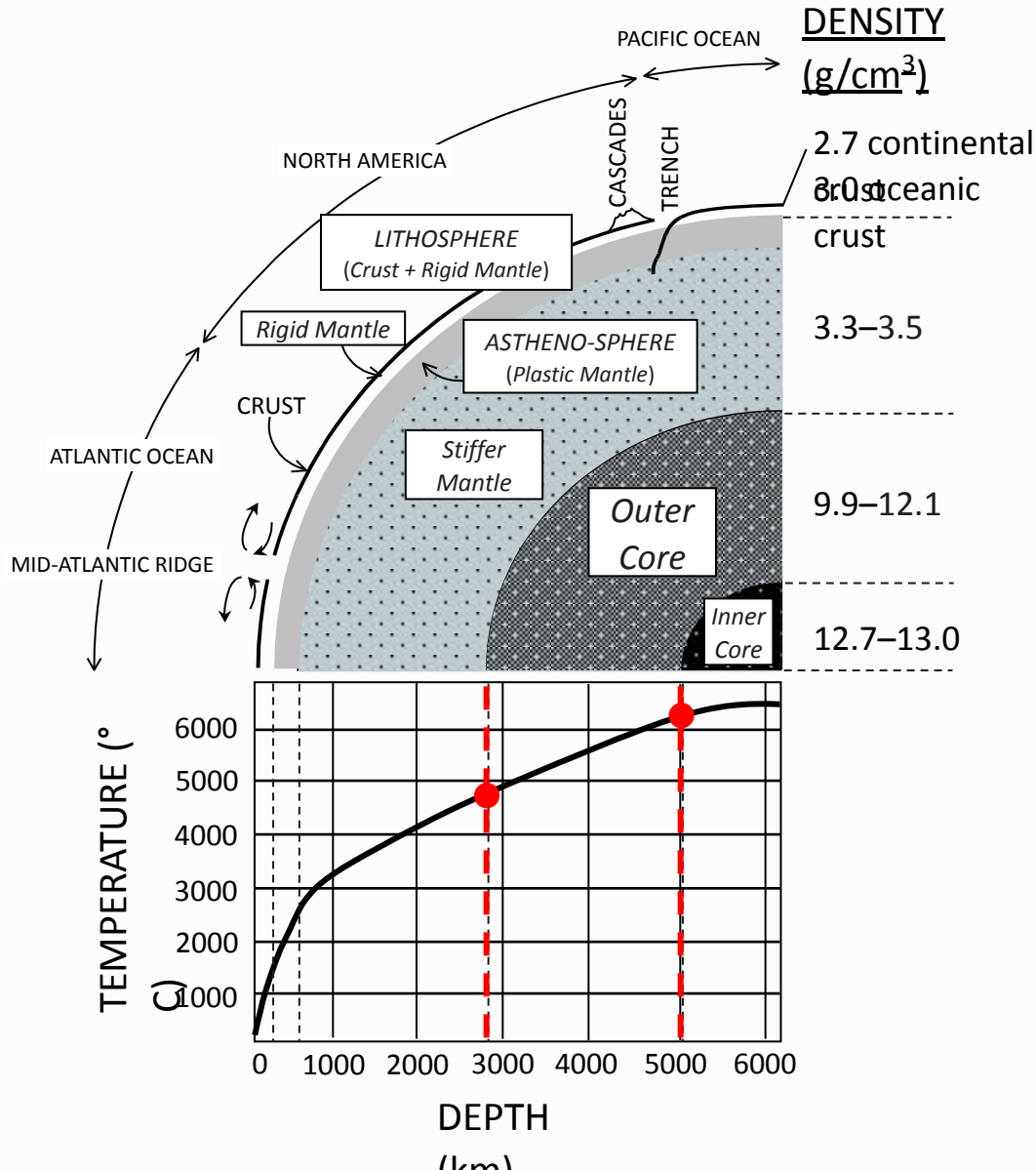
- A) A hinge prevents the mandibles from snapping together forcefully.
- B) Mandibles with cushioned inner edges provide a buffer when the mandibles snap shut.
- C) A latch mechanism prevents the mandibles from closing completely.
- D) The mandibles begin to decelerate before they meet

ACT MATH

If two lines in the standard (x, y) coordinate plane are perpendicular and the slope of one of the lines is 3, what is the slope of the other line?

- A. -3
- B. -1
- C. $-1/3$
- D. $1/3$
- E. 3

ACT SCIENCE



According to Figure 1, the temperature of the Outer Core is approximately between:

- A. 1000° C and 2500° C
- B. 2500° C and 5000° C
- C. 4800° C and 6300° C
- D. 6200° C and 6500° C

COMPARING THE SAT AND ACT

SAT Questions

More challenging

Require deep understanding

Narrower focus of skills

More time per question

ACT Questions

Straightforward

Require instant recognition

Broader scope of skills

Require constant, rapid pace

CHOOSING SAT or ACT



*We were originally thinking **SAT**, but then Noah's admissions advisor told us left-handed students born on Tuesdays do better on the **ACT**.*

CHOOSING SAT or ACT

The best way to make this decision is by taking each one
and comparing scores using a Concordance Table.

CONCORDANCE TABLES

SAT	ACT	SAT	ACT	
1600	36	1340*	29	
1590*		1330		
1580		28	1320	
1570			1310*	
1560			1300	
1550		1290		
1540*	SAT		ACT	
1530				
1520	24			
1510			1190	
1500*			1180*	
1490				
1480				
1470			1170	
1460*				
1450	1160			
1440				
1430*				
1420		1150		
1410		1120	22	
1400*	31	1110*		
1390	30	1100		
1380		1090		
1370*	29	1080*	21	
1360		1070		
1350		1060		

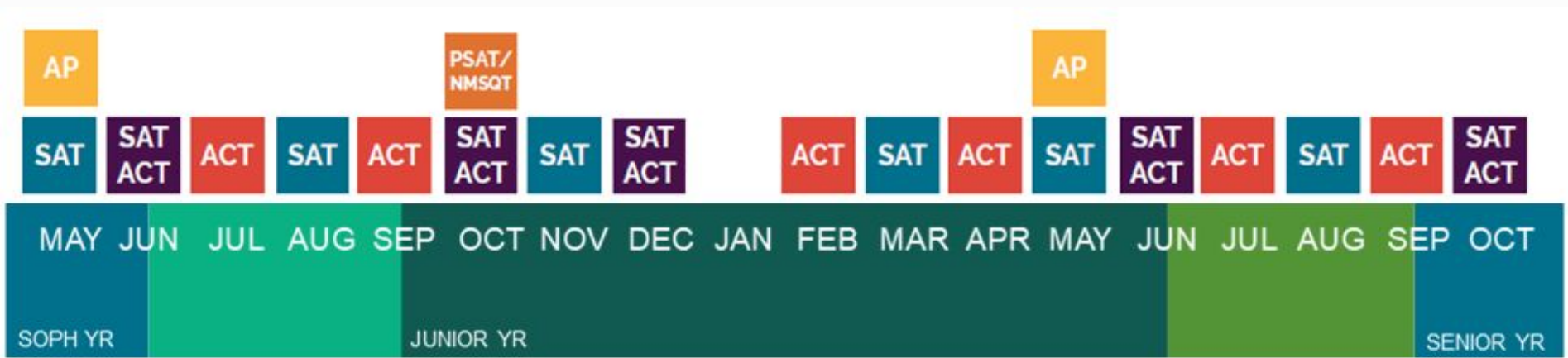
SAT	ACT	SAT	ACT	
1050	20	800*	14	
1040*		790		
1030		780		
1020		770		
1010*	19	760*	13	
SAT		ACT		
1380	30			12
1370*				11
1360			10	
880	15	630*	09	
870		620		
860		610		
850*		600		
840		590*		
830		580	N/A	
820	14	570	N/A	
810		560	N/A	

CREATE A TESTING PLAN

A close-up photograph of a hand holding a dark pencil, writing on a document. The document has some text and a green highlight. In the background, a person's face is blurred, suggesting a classroom or office setting.

When should I take them?

THE TESTS



SAMPLE TESTING PLANS – CLASS OF 2025

Diagnostics
Practice ACT
Digital Practice
SAT

Digital
PSAT/
NMSQT

dSAT

AP

dSAT

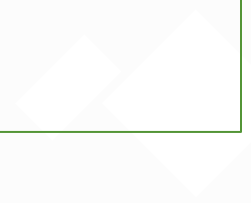
dSAT

MAY JUN JUL AUG SEP OCT NOV DEC JAN FEB MAR APR MAY JUN JUL AUG SEP OCT

TEST PREPARATION

REVIEW

SAMPLE TESTING PLANS – CLASS OF 2025



MAY JUN JUL AUG SEP OCT NOV DEC JAN FEB MAR APR MAY JUN JUL AUG SEP OCT

TEST PREPARATION

REVIEW

SUPERSCORING – SAT

March	
Reading & Writing	Math
580	570
1150	

May	
Reading & Writing	Math
580	650
1230	

August	
Reading & Writing	Math
640	620
1260	

Superscore	
Reading & Writing	Math
1290	

SUPERSCORING – ACT

	FEB	JUNE	SEPT	SUPERSCORE
ENGLISH	28	32	30	
MATH	27	2 28	30	
READING	33	29	0 28	
SCIENCE	27	30	28	
COMPOSITE	29	0 30	29	31

CREATE A TESTING PLAN

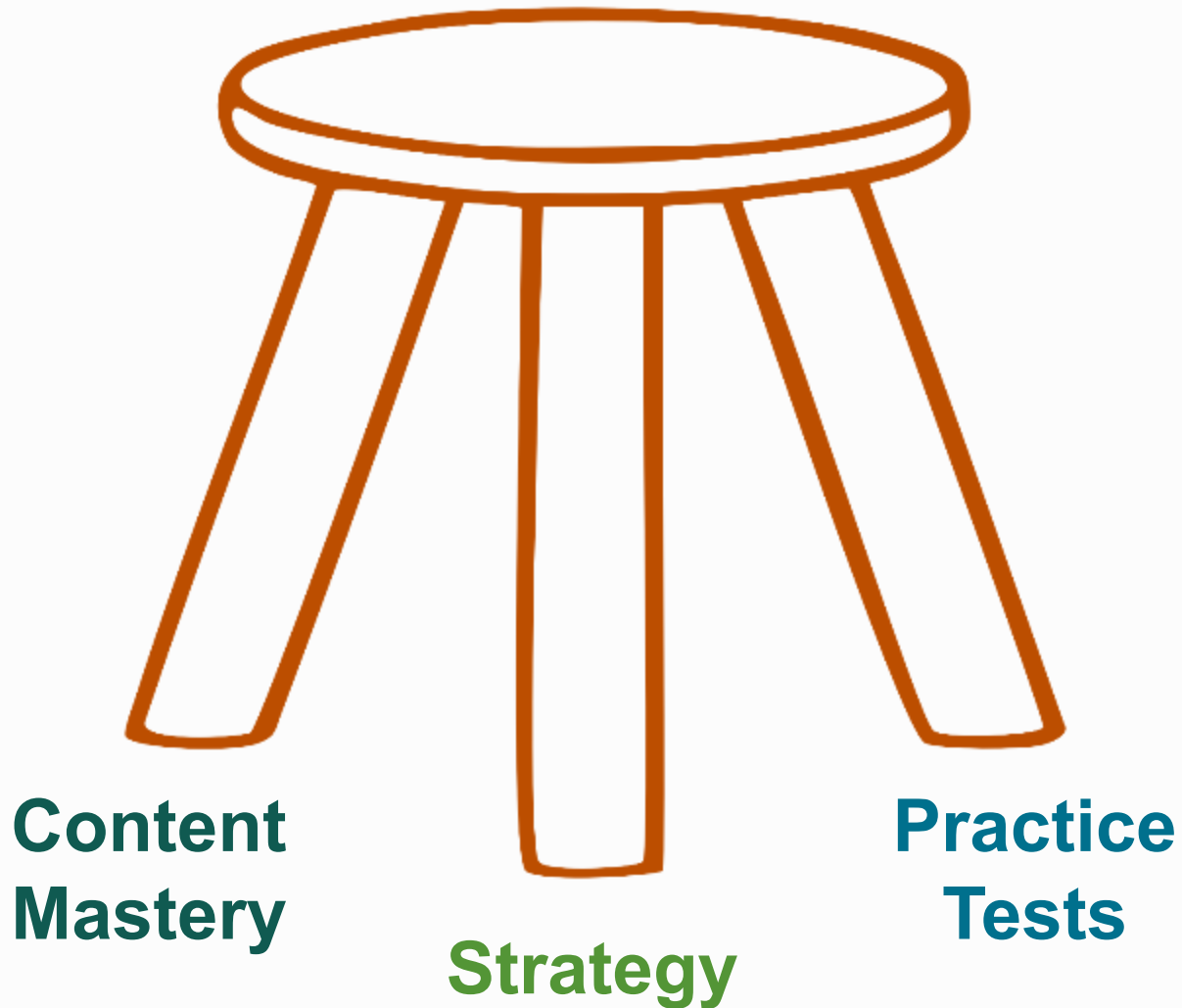
A close-up photograph of a hand holding a dark pencil, poised to write on a document. The document has some text and a green highlight. In the background, a person's face is blurred, suggesting a classroom or office setting.

How and when should I prepare for them?

CHOOSE A START DATE

Test prep should allow for at least 6–15 weeks of study and practice before the official test date.

ELEMENTS OF TEST PREPARATION



GUIDING PRINCIPLES

Encourage students to view the test with an 'everything to gain, nothing to lose' mindset.

A good testing plan prioritizes school work over test prep. Testing early and often is generally not sensible.

Take a practice SAT and ACT for a baseline score and also to choose a path.

Many schools on your final list will be test optional. You can decide which schools you submit scores to and which ones you do not.

LAST, BUT NOT
LEAST

Maintain perspective.
It's just a test.



dheilpern@mytutor.com

SUMMIT EDUCATIONAL GROUP

Grades 4-12 Test Preparation and Academic Support

- One-on-One, In-Home and Online Test Prep and Academic and AP Tutoring
 - Practice SAT and ACT tests
 - 1-1 Advanced Writing and Math Courses
- (800) MY TUTOR MYTUTOR.COM

