

BROOKLINE HIGH SCHOOL

115 GREENOUGH ST. BROOKLINE, MA 02445 617.713.5016 BHS.BROOKLINE.K12.MA.US
P R O F I L E

CEEB code
220445
bhs.brookline.k12.ma.us

Headmaster
Anthony Meyer

Counselors
Darby Neff-Verre
Guidance Coordinator
Lenny Libenzon
College Counselor
Sara Aggeler
Nicole Bent
Kate Cordner
Richard Gorman
Ellen Herz
Clifton Jones
Kara Lopez
Eric Schiff
Kathleen Whelan
Alexandra Young
Linda Wentzell
Registrar
Brenda Aguilar
Guidance Secretary
Stephanie Hunt
African-American Latino Scholars
J. Malcolm Cawthorne
METCO
Amy Bayer
ACE
Daniel Bresman
SWS
Wendy Ryder
April Zyriek
Special Education
Owen Minott
Winthrop House

Superintendent
Ben Lummis (Interim)
 Accreditation: New England Association of Schools and Colleges (N.E.A.S.C.)
 Brookline High School is a member of the National Assoc. for College Admission Counseling and complies with the NACAC Statement of Principles of Good Practice.

Brookline High School was founded in 1843. Today, BHS educates an extraordinarily diverse population of students representing 76 nations and most ethnic groups. 26% of BHS students speak a first language other than English, and 41 languages are spoken by our students.

Recognized as one of the finest schools in the nation by publications such as Boston Magazine, US News and World Report, and Newsweek, Brookline High School is known best for its extensive curriculum, outstanding faculty, and innovative programs and services, leading to students' academic success.

Brookline is a dynamic and progressive community of approximately 60,000 people, deeply committed to the success of its public schools. The school is 6.8% African American, 16.4% Asian, 11.9% Hispanic, 56.1% White, and 8.7% Multi-Ethnic. The median household income in the town is just above \$110,000. In contrast, 15.5% of the students qualify for free or reduced-price lunch. Eight elementary schools and one comprehensive high school educate approximately 7,855 students.

Marking System

The mission of Brookline High School is to develop capable, confident, life-long learners who contribute to their community, participate thoughtfully in democracy, and succeed in a diverse and evolving global society. In order to graduate from The High School, students must earn a total of 22 credits.
 A=4.0; A-=3.7; B+=3.3;
 B=3.0; B-=2.7; C+=2.3;
 C=2.0; C-=1.7; D+=1.3;
 D=1.0; D-=0.7; E=0;

Options: P = Pass; F = Fail;
 W = Withdrew;
 L = Late Entry -- too late for assessment in current marking period;
 N= Failure due to attendance inadequate to meet the requirements of the course.

Grade Point Average is calculated at the end of the junior year and measures final grades from the 10th and 11th grades. All courses granting at least one-half credit per semester are included, except those taken on a pass fail basis and those earning a grade of "N". Advanced Placement and Honors courses are not weighted. Many Senior Year classes are unlevleved. Independent study is available to students on a contractual basis. Levels are clearly indicated on the student's transcript. Marks earned for grades 10 & 11 are averaged on a 4 point scale.

Information on attendance and discipline is not available to colleges per school policy.

We counsel students to answer honestly any questions regarding their disciplinary history on a college application.

School

Total enrollment	2085
Grades included	9, 10, 11, 12
Size of current senior class	474

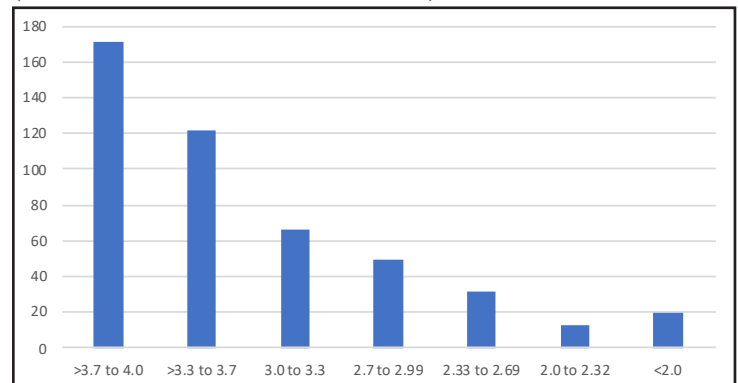
College Admissions Test Scores

SAT Scores, Class of 2018

	EBRW	Math	Total
BHS Mean	638	648	1286
MA Mean	559	561	1120
National Mean	531	528	1059

Class of 2020 Grade Distribution

(Note: We do not calculate rank in class.)



National Merit Scholars

Class of 2019 National Merit Scholar Semi-finalists	7
Class of 2019 National Merit Scholar Commendations	54
Class of 2019 National Hispanic Recognition	8
Class of 2019 National Merit Scholar Finalists	7

Advanced Placement at BHS

BHS offers 18 AP courses: American Government, Biology, Calculus AB, Calculus BC, Chemistry, Chinese, Environmental Science, French, Human Geography, Japanese, Latin, Music Theory, Physics 1&2, Physics C, Spanish, Statistics, Studio Art, and U.S. History.

In May 2017, 534 BHS students took 1,124 AP examinations, with 92.7% earning a score of 3 or higher, and 78.5% earning 4 or higher. The accompanying chart shows the distribution of scores on AP exams.

School Totals	5	4	3	2	1
Total Exams	547	328	158	8	13
% of Total	49%	29%	14%	6%	1%

Subject Totals	5	4	3	2	1	#
Biology	46	25	7			78
Calculus AB	64	45	25	19	6	137
Calculus BC	64	9	1			74
Chemistry	47	21	16		2	86
Chinese	8	3	5	1		17
Comp. Sci.	6	10	3			19
English Lang.	23	13	10	2	1	49
English Lit.	2	3	7	1		13
Environmental Sci.	19	16	3	1		39
French	22	16	1			39
Human Geography	20	28	14	9	1	72
Japanese	7	1	6			14
Latin	1	2	1		1	5
Music Theory	11	7				18
Physics 1	2	16	11	11		40
Physics 2	2	4	13	11		30
Physics C: Elec/ Mag	27	11	2	7		47
Physics C: Mechanics	33	14	1		1	49
Spanish	36	22	7			65
Statistics	34	9	1	1		45
Studio Art	4	6	1			11
US Gov and Politics	24	7	4	1		36
US History	54	32	16	3		105

AP Scholars Total Scholars: 221; Average Score: 4.39

	AP Scholar	AP Scholar with Honor	AP Scholar with Distinction	National AP Scholar
Number	73	59	89	8
Average Score	4.07	4.27	4.51	4.87



Class of 2019 - 478 graduates

Attending 4-Year Colleges	88%
Attending 2-Year Colleges:	4%
Attending non-U.S. Colleges:	3%
Total Continuing Education	95%
Employment	2%
Other, Including Military	1%
Gap Year	2%

Colleges Attending (Class of 2019)

American*, Amherst, Art Institute of Chi, Babson, Bard, Barnard, Bates, Baylor, Ben Franklin IT, Berklee C. of Music, Boston C.*, Boston U.*, Brandeis*, Bridgewater State*, Bridgton Academy, Brown, Bryant, Bryn Mawr, Bucknell, Bunker Hill CC*, C. of Charleston, Cal Lutheran, Carleton, Carnegie Mellon, Case Western Reserve*, Claremont McKenna, Clark Atlanta, Clark*, Colby, Colgate, Colorado, Colorado State, Columbia*, Connecticut C., Cornell, Curry, Dartmouth, Dean, Denison, Dublin City, Duke, Earlham, Embry-Riddle, Emerson, Emory, Florida I. T., Fordham, Framingham State, Furman, George Washington*, Georgetown, Gettysburg, Hamilton, Harvard*, Hofstra, Holy Cross, Hotelschool The Hague, Howard, Indiana, Ithaca, Johns Hopkins, Johnson & Wales, Keene State, Lafayette, Landmark, Lasell, Lesley, Loyola Marymount, Loyola Chicago, Lynn, M.I.T., Macalester, Maine C. of Art, Mass. C. of Art and Design*, Mass. C. of Pharmacy*, Mass Bay CC*, McGill, Miami (Ohio), Middlebury, Mitchell, Montana State, Montserrat C. of Art, Mount Holyoke, National C. of Ireland, N. Y. U. Norfolk State, Northeastern*, Northwestern, Oberlin, Occidental, Ohio Wesleyan, Old Dominion, Oxford, Pace, Penn State, Pitzer, Pomona, Prairie View A&M, Pratt Inst., Providence, Queen's, Quinnipiac, R. I. S. D., R.I.T., R.P.I., Reed, Rhode Island, Rice, Roger Williams, Saint Joseph's, Saint Michael's, Santa Clara, Sarah Lawrence, SCAD, Simmons, Skidmore, Smith, St. John's, St. Lawrence, Stanford, Stony Brook, Suffolk, Swarthmore, Sweet Briar, Syracuse, The New School*, Towson, Trinity, Trinity (Dublin), Tufts*, Tulane*, U. B., Utrecht, Cal Berkeley, Cal San Diego, Cal Santa Barbara, Cal Santa Cruz, UC Cincinnati, UConn*, Delaware, Illinois, Kentucky, Maryland, UMass Dartmouth*, UMass Amherst*, UMass, Boston*, UMass, Lowell*, Michigan*, Minnesota, U. N. H., UPenn., Pitt., U. R. I., Richmond, Rochester, USC, S. Carolina, Toronto, Virginia, Vermont*, Washington, UCLA, Union, US Naval Academy, Vassar*, Virginia Union, W. I. T., Wake Forest, Wash. U St. Louis, Wellesley, Wesleyan, Westfield State, Wheaton, Whitman, Williams, Yale

*INDICATES TOP 25 SCHOOLS ATTENDING